

## SMT High Current Power Inductors - SBP1308 SERIES

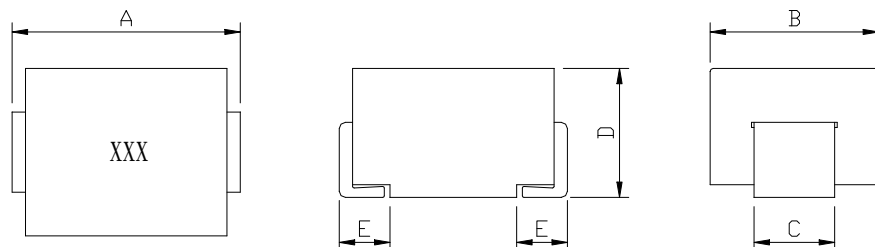
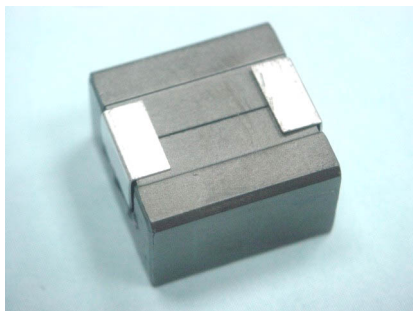


### PART NUMBERING SYSTEM

<b>SEP</b>	<b>1308</b>	—	<b>R44M</b>	—	<b>LF</b>
TYPE	DIMENSIONS		INDUCTANCE		LEAD FREE

### SHAPES AND DIMENSIONS

UNIT : mm

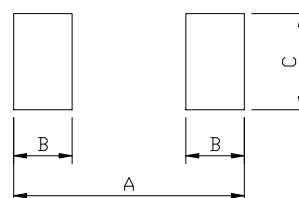


A=13.46 Max. B=13.0 Max. C=5.0 ± 0.2 D=8.0 Max. E=2.54 ± 0.3

### RECOMMENDED PATTERNS

UNIT : mm

A=13.47 B=3.18 C=7.62



### FEATURES

1. Voltage regulator modules (VRMs) for servers, microprocessors.
2. High frequency, high current switching power supplies.
  - Electrical Characteristic
    - a. Storage temperature range : -40°C to + 125°C.
    - b. Operating ambient temperature range : -40°C to + 85°C (range is application specific)
    - c. Infrared reflow temperature : +260°C for 10 seconds maximum.
    - d. Frequency Range : 300KHz to 2MHz.
3. Surface mount inductors designed for high speed, high current switch mode applications requiring lower inductance.
4. Inductance values from 210nH to 500nH, Current range up to 71 Amps.

## SMT High Current Power Inductors - SBP1308 SERIES

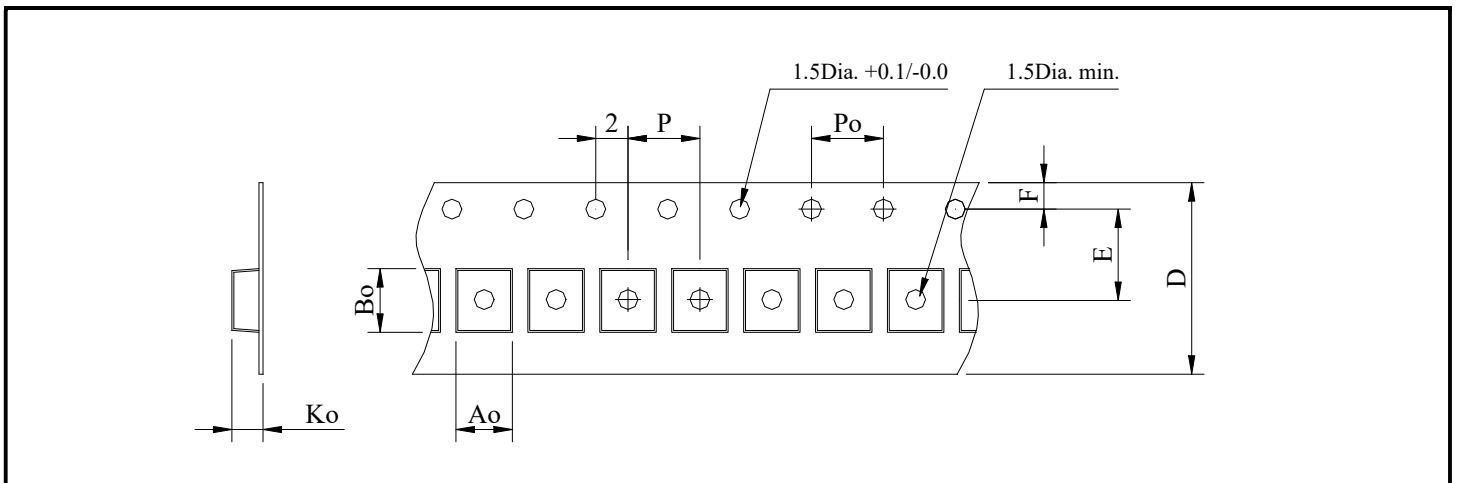


### SPECIFICATION TABLE

PART NUMBER	INDUCTANCE (nH)	DCR (mΩ)	DCR (mΩ) (Max.)	I rms Amps	I sat (peak) Amps
SBP1308-R21M-LF	210±20%	0.32mΩ±9.4%	0.35	45	71
SBP1308-R26M-LF	260±20%	0.32mΩ±9.4%	0.35	45	60
SBP1308-R32M-LF	320±20%	0.32mΩ±9.4%	0.35	45	50
SBP1308-R44M-LF	440±20%	0.32mΩ±9.4%	0.35	45	35
SBP1308-R50M-LF	500±20%	0.32mΩ±9.4%	0.35	45	28

- Isat: DC current at which the inductance drops 20% (typ.) from its value without current.
- Irms: Average current for 40°C temperature rise from 25°C ambient.

### PACKAGING SPECIFICATION



STAYLE	Q'TY (PCS)	DIMENSIONS (m/m)							
		Ao	Bo	Ko	P	Po	D	E±0.1	F±0.1
13~16	450	13.0±0.1	13.5±0.1	8.05±0.1	16.0±0.1	4	24.0±0.3	11.5	1.75

Inner Box : 900pcs

Carton Qty : 3600pcs